

# TACTICAL BASKETS //

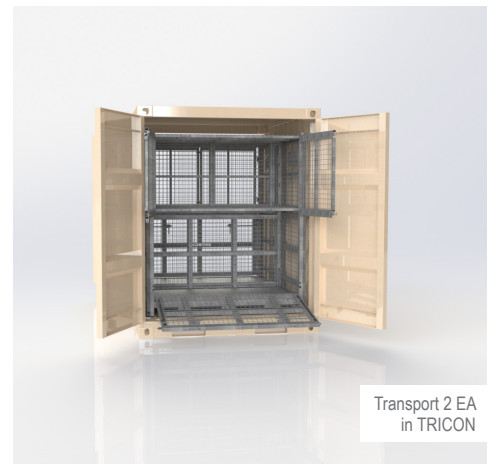
## **CONDOR MEDIUM**

- **PERFECT FOR TENTS.** USE THE GATE TO ROLL A LARGE TENT OR COVER INTO THE CAGE
- **HINGED DOORS AND LARGE FRONT GATE**
- **MAXIMIZE SPACE IN A TRICON**



PART NO.	SC-BA-MD-GD-03
SIZE (W/D/H)	70 / 41 / 79
SHELF TYPE	LONG SHELF
NO. OF COMPARTMENTS / LEVELS	2 COMP / 2 LEVELS
NO OF SHELVES	1 EA
SHELF CAPACITY	~ 1000 LBS
TARE WEIGHT	~ 705 LBS
CAPACITY	4000 LBS*
MATERIAL	GALVANIZED HIGH STRENGTH STEEL AND STAINLESS STEEL
TOPLIFT	YES. IN COMPLIANCE WITH MIL-STD-913A, -209K and -648D
FORKLIFT	YES (4-WAY). IN COMPLIANCE WITH STANAG-2828 AND 2829, AND MIL-STD-648D
STACKABILITY	2 CAGES
QTY TO OUTFIT TRICON	2 EA
MOBILITY	LAND / SEA / AIR. IN COMPLIANCE WITH MIL-STD-1791D, -1366E AND STANAG-3400

\*FOR TRANSPORT ON FIXED WING AIRCRAFT, CONTACT THE SHARKCAGE TEAM FOR LOAD CONFIGURATION.



SHARKCAGE INC. / 7648 REINDEER TRAIL / SAN ANTONIO TX 78238  
PH: 210-722-3403 / [WWW.SHARKCAGE.COM](http://WWW.SHARKCAGE.COM)



ACCESSORIES & VERSIONS	
TYPE	PART NO.
GREY COVER	SC-CI-MD-CV-41
GREEN COVER	SC-CI-MD-CV-42
TAN COVER	SC-CI-MD-CV-43



GSA SCHEDULE:  
GS-02F-0123U  
CAGE CODE:  
54TC1